

Rehoboth Beach-Dewey Beach, Delaware Beach Replenishment/Storm Damage Reduction Project

Purpose of the Project

- To provide coastal storm damage reduction and shoreline protection along 2.5 miles of ocean front from the northern end of Rehoboth Beach to the southern end of Dewey Beach.

Who is Involved?

- The U. S. Army Corps of Engineers is managing project construction and providing 65% of the initial construction and periodic nourishment.
- The Delaware Department of Natural Resources and Environmental Control (DNREC) is providing the balance of funds as the non-Federal sponsor.
- Great Lakes Dredge & Dock Company is performing the construction.

What Will it Cost?

- Initial project construction cost is approximated at \$10,324,560, and the estimated cost of periodic nourishment per cycle (approximately every 3 years) is \$4.0 million.
- Total estimated project cost for the beachfill and dune system is \$118 million over the 50-year project life. This cost estimate includes initial construction costs, periodic nourishment, major rehabilitation, and project monitoring over 50 years.

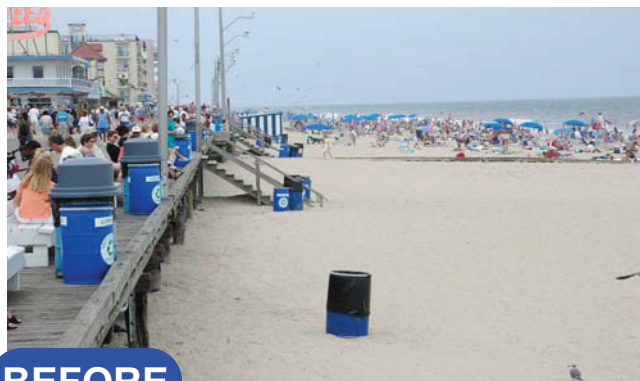
Project Overview

- The project will cover a total length of 13,500 feet (2.5 miles).
- Project design: approximately 1.7 million cubic yards of sand will be pumped from an offshore borrow area to construct a beach and dune system.
- The source of sand for initial construction and subsequent periodic nourishment is a borrow area (Area G) located approximately 2.6 miles east of Indian River Inlet.
- Beach design: Rehoboth: 125-foot wide beach and 25 foot wide dune crest; Dewey: 150-foot wide beach and 25 foot wide dune crest
- Dune design: dunes will be built to an elevation 6-foot above the beach.
- Crossovers: pedestrian, handicap and maintenance vehicle will be constructed at designated locations.
- Sand fence will be installed and beach grass will be planted.
- Storm water outfall extensions will be constructed in Rehoboth Beach only (to be constructed by others).

Where and When Will it Happen?

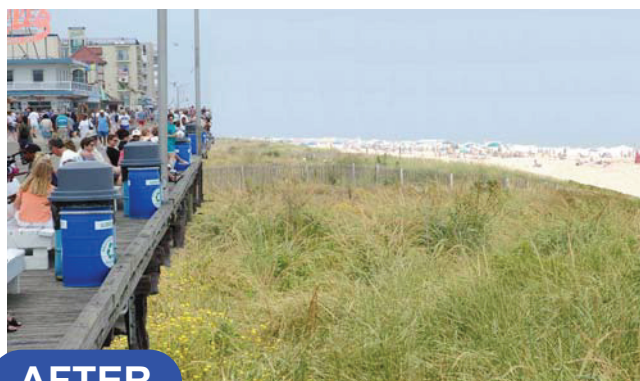
- Initial construction began in February 2005
- Construction will start at the south end of Dewey Beach in the vicinity of Beach Avenue and proceed south to Indian Beach, then north to northern limits of Dewey Beach. Once Dewey is completed, the operation will move into Rehoboth Beach.
- To ensure public safety, 1000-foot segments of beach will be closed off as nourishment progresses, restricting public access to the active construction zone.

**Questions? Contact the Public Affairs Office,
Philadelphia District, USAGE at (215) 656-6515**



BEFORE

Rehoboth Beach before project - 2004



AFTER

Depiction of Beach and Dune after project is completed and grass is planted

Information as of 6/30/05

Beach Replenishment Completion PRESS CONFERENCE

Senator Tom Carper and Congressman Mike Castle will be holding a press conference on Friday, July 1st at 11:15 am at the Boardwalk and Baltimore Avenue. The Chamber will be providing "Thank you" signs and a photo opportunity. Hope you can join us!!

UPDATES

- ✓ Completion of all pumping remains as scheduled to be completed by end of day. The entire beach is/will be open from Surf Avenue to the southern-most point.
- ✓ Equipment will be staged and stored in as condensed manner as is possible in the Deauville Beach area.

REMAINING TO BE DONE

- ✓ All pipelines will be removed
- ✓ Handicapped dune crossings will be installed next week

continued on page 2

- ✓ The week of July 11th, a two foot fence will be installed parallel to the Boardwalk
- ✓ The week of July 18th, pedestrian dune crossings will be installed
- ✓ Dune plantings scheduled in the fall. Any reminders to your customers to stay off the dunes will be appreciated.

IMPORTANT NOTES

- ✓ No work is scheduled over the July 4th holiday weekend
- ✓ Any remaining work after July 3rd will be scheduled Monday – Friday from 7:00 am – 3:00 pm with no weekends or holidays

Information as of 6/24/05

PUMPING:

- ✓ Currently pumping at Hickman Street northward – will be completed tonight. This will complete the area from Grenoble Place to Philadelphia Street. The beach will be open to the public in this entire area.
- ✓ Pumping continues from Grenoble Place to Surf Avenue and should be completed Monday, June 27th.
- ✓ By Monday, June 27th, all beach area south of Surf Avenue and Lake Avenue will be open and pumping will continue north.
- ✓ Final pumping completion date is July 2nd – 3rd.
- ✓ Deauville Beach area will continue to be used for storage.

PIPES:

- ✓ All efforts are being made to remove the pipes before July 4th; potentially the pipes could be left in place as this part of the project is equipment accessibility dependent.

FENCING:

- ✓ Approval for two foot (not four foot) fencing has been received. The view will not be blocked.

REMAINING TO BE DONE:

1. Fencing
2. Crossovers (most located where the old steps previously were)
3. Grass planting – November
4. Recreational volleyball lighting and nets replaced
5. Foot shower areas water basin insulation
6. Late fall – two more outfalls to be placed at Grenoble Place and Maryland Avenue

Information as of 6/9/05

- ✓ Three (3) pipes are in place; one south of Laurel Street, one just south of Rehoboth Avenue and one at

Grenoble Place

- ✓ Two (2) pipes are pumping at Rehoboth Avenue moving north and one at Grenoble Place moving south — they will meet at approximately Olive Avenue
- ✓ Pumping completion scheduled within the next 10 days between Rehoboth Avenue and Grenoble Place
- ✓ Pumping to begin at 3rd pipe location (Laurel Street) approximately on June 20th with completion prior the end of June
- ✓ 200 feet of pumping is complete to date
- ✓ The north end dune line builds to Lake Avenue and tapers to Deauville Beach
- ✓ Snow fences and crossovers will be placed during the month of July — weekday work only — no nights and full beach access
- ✓ Grass plantings on dunes scheduled for December

Information as of 6/3/05

The initial pipe is now at Grenoble Place. Unlike prior beach replenishment which moved in only one direction north to south, a revised plan uses three onshore pipes instead of two, with one moving northward and one moving southward, and a third one to be placed during the final stage on the far south end of beach. Pumping will begin at the Grenoble Place pipe, where dozers will push the new sand to its proper elevation against the Boardwalk, then elevate it seaward to the surf line and then move southward.

A second pipe will be placed next to the nearest groin at the end of Rehoboth Avenue and will move northward from that point. The replenishment will meet near Maryland Avenue. By mid-June, a third pipe will fill southward from the beach near Star of the Sea ending with the tapering at the south end.

**Note: Source of some of the above verbiage is from Jim Cresson's Cape Gazette article.*

Additional Information:

- ✓ Crews have agreed to keep the actual job site compacted to a width of 300 to 400 feet
- ✓ Replenishment moves about 200 feet a day
- ✓ Work will begin as soon as weather allows
- ✓ Schedule calls for completion by the end of June
- ✓ Hours of operation: 24 hours a day, 7 days a week
- ✓ Chain of command has been established with the City of Rehoboth, the Rehoboth Beach-Dewey Beach Chamber of Commerce and Great Lakes Dredge and Dock Company
- ✓ Dates are approximations and are subject to change due to weather conditions and mechanical breakdown.

continued on page 3

Information as of 2/16/05

- Dual dredges will be used and two landfall sites will start the project in Dewey Beach
- First dredge to arrived in February; second dredge arrives in mid-March
- With use of 2nd dredge, completion by the end of May is expected
- Pumping runs south to north; pumping in Rehoboth is scheduled to begin in April/May with completion expected by end of May
- The City is working with the Chamber to seek a solution to the electric connections on the Boardwalk for Christmas displays and other future electrical needs
- Lighting for electrical needs for recreational use is also being addressed
- Foot showers will be on the east side of the Boardwalk with the possibility of one additional location being added
- Dune fencing at Boardwalk will be no higher than 2'

NOTE: Depending on the crest of the dune line, in some places there will be an even step off from the Boardwalk onto the dunes; at some places there will be a slight crest up (possibly 2' higher than the Boardwalk) and at some places steps down. The dune line rolls back under the Boardwalk. Initial sand coverage will be altered by nature with a final result in approximately 6 - 9 months after completion.